



8 Lawn Drive Swinton Manchester M27 5SA

£1,250 Per calendar month

AVAILABLE 1st OCTOBER! HOME ESTATE AGENTS are pleased to offer for rent this well presented and much improved three bedroom semi detached property located in a popular Swinton location. With easy access to Swinton, Salford and Worsley, the property is well positioned for several local amenities and is perfect for families. The property comprises hallway, lounge, open plan modern fitted kitchen, shaped landing, three bedrooms and a modern fitted bathroom suite. Externally there is a driveway to the front and a sizeable garden with raised decked area to the rear. Offered on an un-furnished basis and available 1st October. Call HOME On 01617898383 to view!

- AVAILABLE 1st OCTOBER
- Hallway
- Modern fitted bathroom suite
- Offered on an un-furnished basis
- Popular Swinton position!
- Lounge
- Gardens to the front and rear
- Three bedroom semi detached
- Open plan modern kitchen/diner
- Driveway to the front



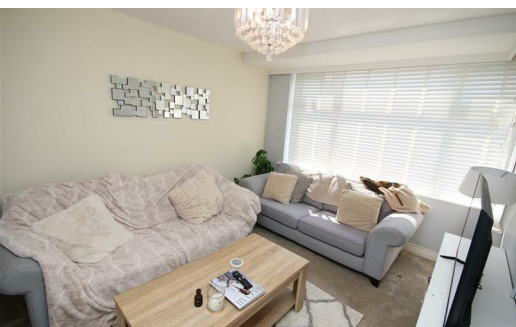
LOCAL EXPERTS THAT GET YOU MOVING

 www.homeestateagents.com

Lettings info

We are advised that the current council tax band is band B.

The current EPC rating is D.

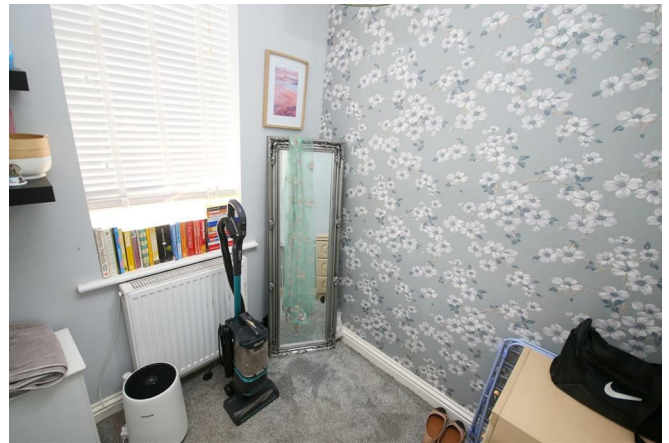


LOCAL EXPERTS THAT GET YOU MOVING

 www.homestateagents.com

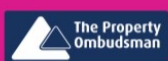


Registered Address Vantage House, East Terrace Business Park, Euxton Lane, Euxton PR7 6TB - England
Company Registration numbers Monton - 9262084 Urmston - 04331861 Stretford - 08259553



LOCAL EXPERTS THAT GET YOU MOVING

 www.homeestateagents.com



Registered Address Vantage House, East Terrace Business Park, Euxton Lane, Euxton PR7 6TB - England
Company Registration numbers Monton - 9262084 Urmston - 04331861 Stretford - 08259553

Energy Efficiency Rating		
	Current	Potential
Very energy efficient - lower running costs		
(92 plus) A		
(81-91) B		
(69-80) C		
(55-68) D		
(39-54) E		
(21-38) F		
(1-20) G		
Not energy efficient - higher running costs		
England & Wales	EU Directive 2002/91/EC	

Environmental Impact (CO ₂) Rating		
	Current	Potential
Very environmentally friendly - lower CO ₂ emissions		
(92 plus) A		
(81-91) B		
(69-80) C		
(55-68) D		
(39-54) E		
(21-38) F		
(1-20) G		
Not environmentally friendly - higher CO ₂ emissions		
England & Wales	EU Directive 2002/91/EC	

LOCAL EXPERTS THAT GET YOU MOVING

 www.homestateagents.com



Registered Address Vantage House, East Terrace Business Park, Euxton Lane, Euxton PR7 6TB - England
Company Registration numbers Monton - 9262084 Urmston - 04331861 Stretford - 08259553